



TRUSTED, ACCURATE AND RELIABLE!

The most comprehensive IT certification
preparation materials in the industry!

All rights reserved. No part of this document may be reproduced, distributed, or transmitted in any form or by any means, including photocopying, recording, or other electronic or mechanical methods, without the prior written permission of the publisher, except in the case of brief quotations embodied in critical reviews and certain other non-commercial uses permitted by copyright law. Unauthorized copying, reselling, or distribution of this document is strictly prohibited and may result in legal action.

<https://www.virtulearner.com>
support@virtulearner.com

Blue Prism

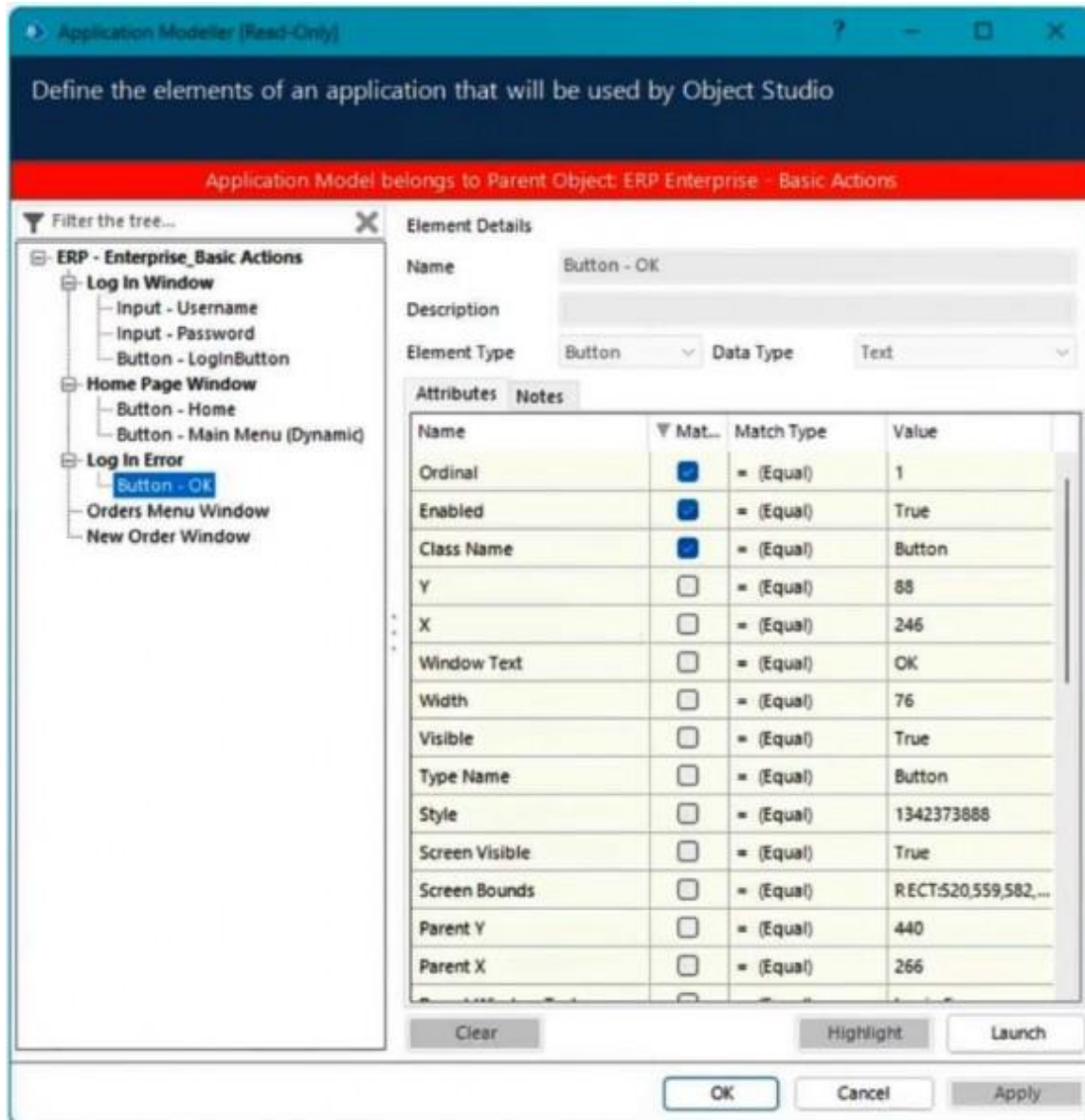
DEV01

Blue Prism Developer

Exam Topic: Exam A

QUESTION: 1

Please refer to the exhibit.



A Developer is unable to make changes to the Elements in the Application Modeller. What are the TWO reasons for this? (Choose two.)

- A. Shared Application Model is locked for edits
- B. Run Mode of the Object is set to Exclusive
- C. Application Modeller is opened at process runtime
- D. Target application is not launched or attached
- E. User account does not have the permissions

Answer(s): A, C

Explanation:

The red banner at the top clearly states "Application Model belongs to Parent Object" and shows it is in read- only mode, which confirms the model is part of a shared object and is locked for editing.

When Application Modeller is accessed during process runtime, it opens in read-only mode to prevent changes during execution.

QUESTION: 2

Please refer to the exhibit.

The Developer is automating an SAP Windows-based application within a Citrix environment. There is an issue with a duplicate match found when identifying and highlighting the DocumentNo. field, due to the application window having two of the same labels and buttons.

The screenshot displays two SAP application windows side-by-side. The top window is titled 'Invoicing' and contains a 'Check Documents' checkbox (checked), followed by three rows of input fields: 'Document No.', 'Invoicing validation', and 'Manual OS in Invoic.'. The bottom window is titled 'Billing' and contains a 'Check Documents' checkbox (unchecked), followed by eight rows of input fields: 'Document No.', 'Contract', 'No. of billing run', 'Billing Validation', 'Manual OS in Billing', 'Company Code', 'Division', and 'Meter reading unit'. Both windows have a 'to' label and a corresponding input field to the right of each main input field, and a vertical stack of yellow arrow buttons on the far right.

Which Spy Mode should the Developer use to identify the correct field using Surface Automation?

- A. Win32
- B. Region
- C. Browser
- D. Application Navigator

Answer(s): B